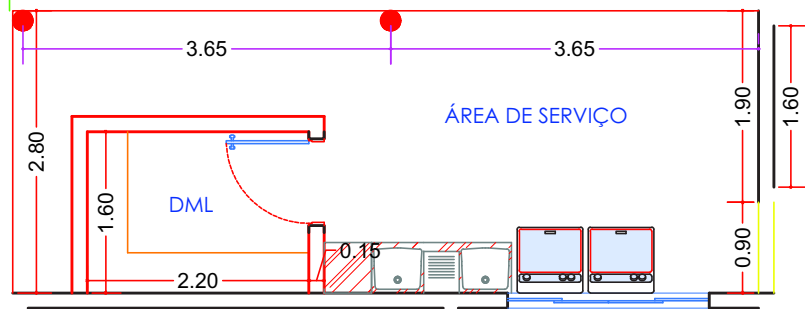


ESTRUTURA = 2 PILARES CIRCULARES, $\phi 15\text{cm}$



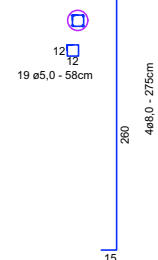
PILAR - 2 VEZES

FORMA= TUBO PVC $\phi 15\text{cm}$ - 240cm \Rightarrow 480cm

CONCRETO = $1 \times 0,075^2 \times 2,40 = 0,042\text{m}^3 \Rightarrow 0,09\text{m}^3$

ARMAÇÃO = $4\phi 8,0 \times 2,75 = 11,00\text{m} \Rightarrow 22,0\text{m} = 2 \text{ BARRAS} = 22,0 \times 0,39 \times 1,1 = 9,40\text{Kg}$

$19\phi 5,0 \times 0,58 = 11,00\text{m} \Rightarrow 22,0\text{m} = 2 \text{ BARRAS} = 22,0 \times 0,15 \times 1,1 = 3,60\text{Kg}$



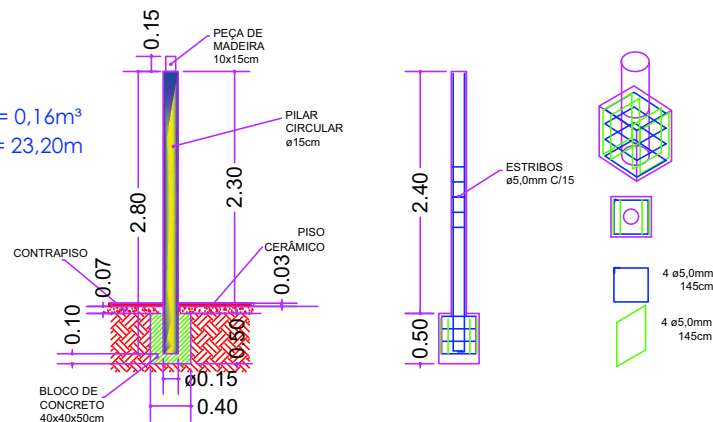
FUNDAÇÃO

2 BLOCOS 40x40x50cm

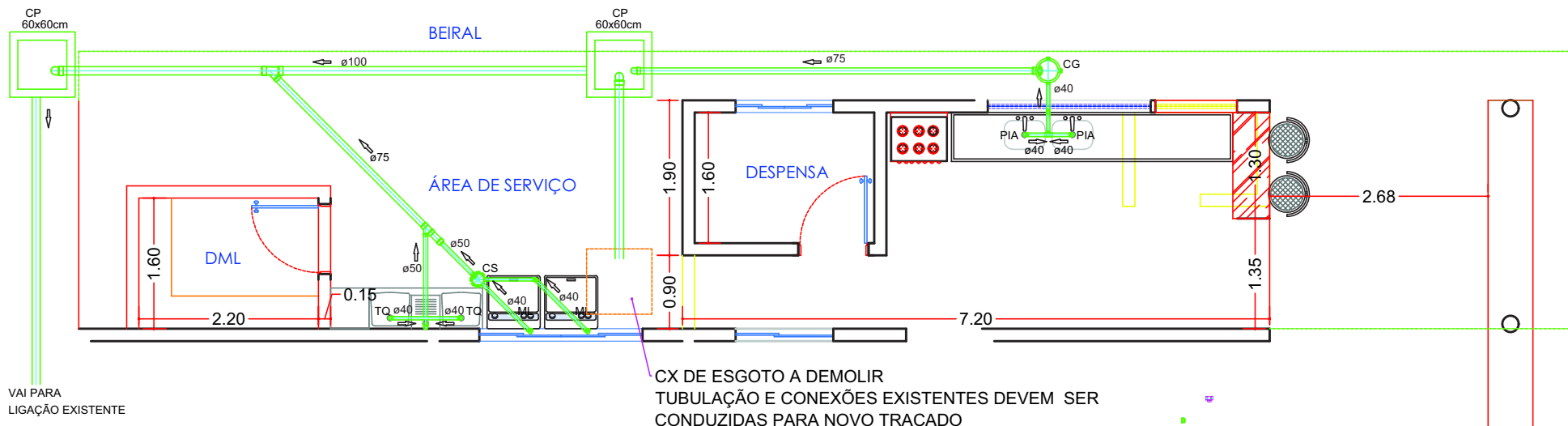
2 VEZES - CONCRETO = $40 \times 40 \times 50 = 0,16\text{m}^3$

ARMAÇÃO = $[(2 \times (4+4)) \phi 5,0] \times 1,45 = 23,20\text{m}$

$23,20 \times 0,15 \times 1,1 = 3,82\text{Kg}$



ESGOTO



CX DE ESGOTO A DEMOLIR
TUBULAÇÃO E CONEXÕES EXISTENTES DEVEM SER
CONDUZIDAS PARA NOVO TRAÇADO